

6.2 T800-04 RSSI PCB

This section contains the following information.

IPN	Section	Page
220-01138-00	Parts List	6.2.3
	PCB Layout - Bottom Side	6.2.5
	PCB Layout - Top Side	6.2.6
	T800-04 Circuit Diagram	6.2.7

T800-04 Parts List (IPN 220-01138-00)

How To Use This Parts List

The components listed in this parts list are divided into two main types: those with a circuit reference (e.g. C2, D1, R121, etc) and those without (miscellaneous and mechanical).

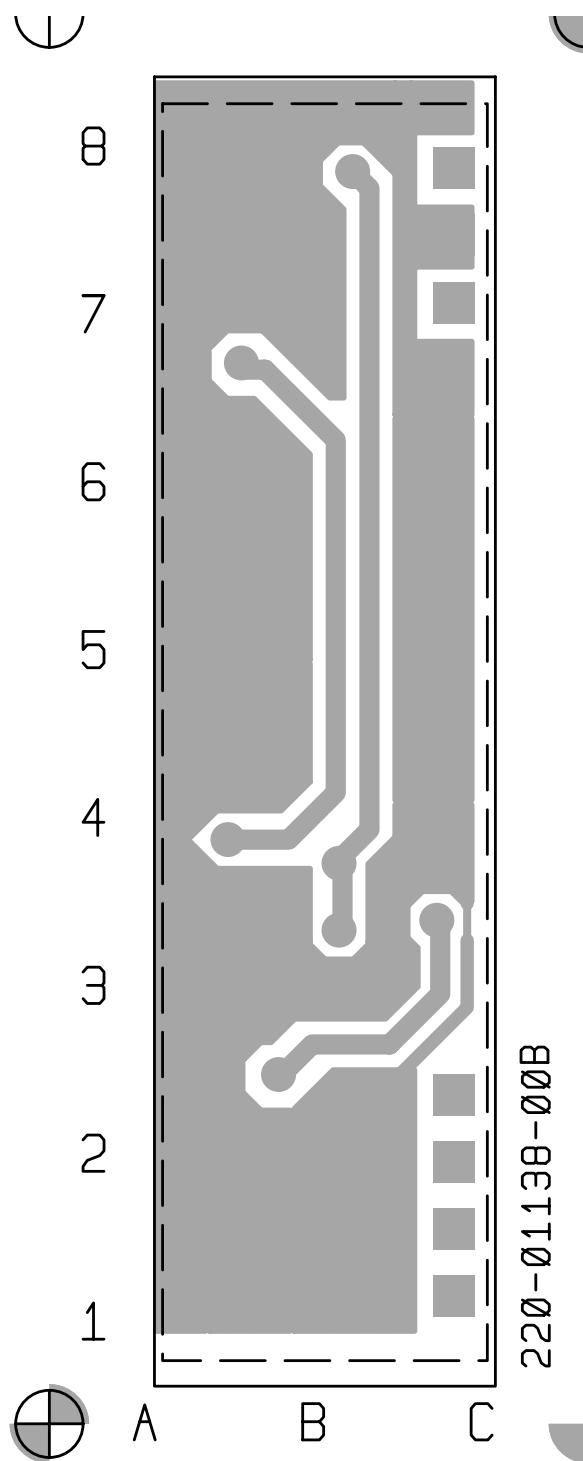
Those with a circuit reference are grouped in alphabetical order and then in numerical order within each group. Each component entry comprises three or four columns: the circuit reference, variant (if applicable), IPN and description. A number in the variant column indicates that this is a variant component which is fitted only to the product type listed.

The miscellaneous and mechanical section lists the variant and common parts in IPN order.

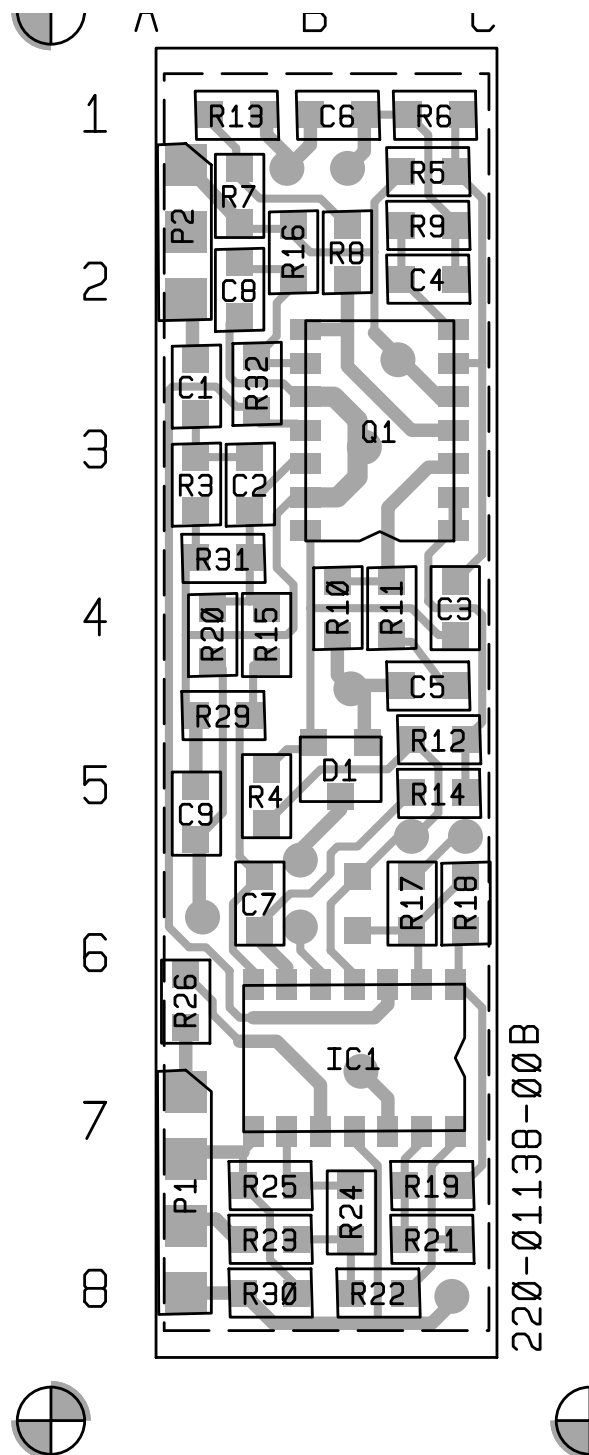
Parts List Amendments

There were no amendments to the parts list at the time of publication.

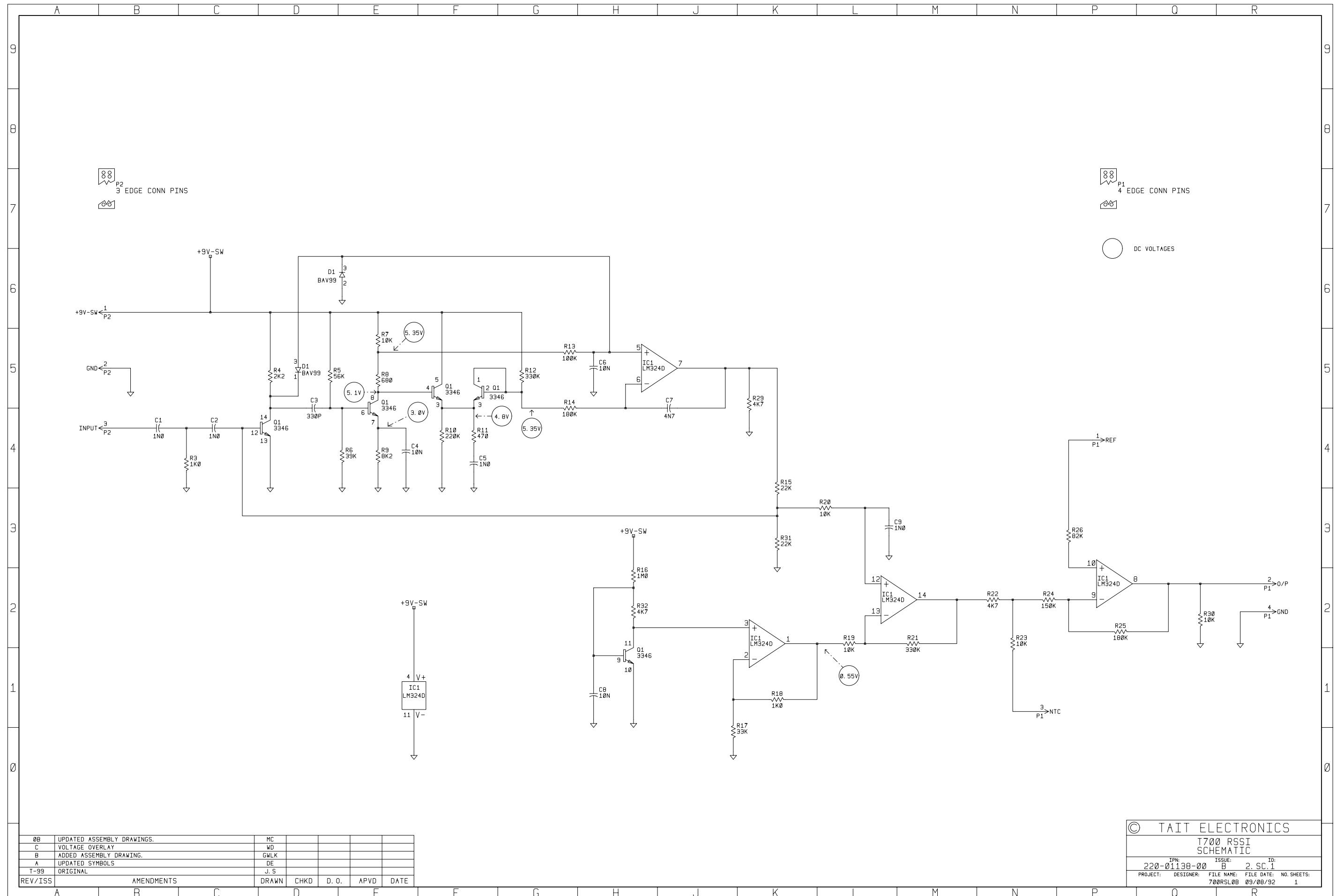
Ref	Var	IPN	Description	Ref	Var	IPN	Description
C1		015-24100-08	CAP CER 0805 CHIP 1N 10% X7R 50V				
C2		015-24100-08	CAP CER 0805 CHIP 1N 10% X7R 50V				
C3		015-23330-08	CAP CER 0805 CHIP 330P 10% X7R 50V				
C4		015-25100-08	CAP CER 0805 CHIP 10N 10% X7R 50V				
C5		015-24100-08	CAP CER 0805 CHIP 1N 10% X7R 50V				
C6		015-25100-08	CAP CER 0805 CHIP 10N 10% X7R 50V				
C7		015-24470-08	CAP CER 0805 CHIP 4N7 10% X7R 50V				
C8		015-25100-08	CAP CER 0805 CHIP 10N 10% X7R 50V				
C9		015-24100-08	CAP CER 0805 CHIP 1N 10% X7R 50V				
D1		001-10000-99	(S) DIODE SMD BAV99 DUAL SWTCH SOT23				
IC1		002-10003-24	(S) IC SMD 324 QUAD OP AMP SO14				
Q1		002-10033-46	(S) IC SMD MC3346D XSTR ARRAY SO14				
R3		036-14100-00	RES M/F 0805 CHIP 1K 5%				
R4		036-14220-00	RES M/F 0805 CHIP 2K2 5%				
R5		036-15560-00	RES M/F 0805 CHIP 56K 5%				
R6		036-15390-00	RES M/F 0805 CHIP 39K 5%				
R7		036-15100-00	RES M/F 0805 CHIP 10K 5%				
R8		036-13680-00	RES M/F 0805 CHIP 680E 5%				
R9		036-14820-00	RES M/F 0805 CHIP 8K2 5%				
R10		036-16220-00	RES M/F 0805 CHIP 220K 5%				
R11		036-13470-00	RES M/F 0805 CHIP 470E 5%				
R12		036-16330-00	RES M/F 0805 CHIP 330K 5%				
R13		036-16100-00	RES M/F 0805 CHIP 100K 5%				
R14		036-16180-00	RES M/F 0805 CHIP 180K 5%				
R15		036-15220-00	RES M/F 0805 CHIP 22K 5%				
R16		036-17100-00	RES M/F 0805 CHIP 1M 5%				
R17		036-15330-00	RES M/F 0805 CHIP 33K 5%				
R18		036-14100-00	RES M/F 0805 CHIP 1K 5%				
R19		036-15100-00	RES M/F 0805 CHIP 10K 5%				
R20		036-15100-00	RES M/F 0805 CHIP 10K 5%				
R21		036-16330-00	RES M/F 0805 CHIP 330K 5%				
R22		036-14470-00	RES M/F 0805 CHIP 4K7 5%				
R23		036-15100-00	RES M/F 0805 CHIP 10K 5%				
R24		036-16150-00	RES M/F 0805 CHIP 150K 5%				
R25		036-16180-00	RES M/F 0805 CHIP 180K 5%				
R26		036-15820-00	RES M/F 0805 CHIP 82K 5%				
R29		036-14470-00	RES M/F 0805 CHIP 4K7 5%				
R30		036-15100-00	RES M/F 0805 CHIP 10K 5%				
R31		036-15220-00	RES M/F 0805 CHIP 22K 5%				
R32		036-14470-00	RES M/F 0805 CHIP 4K7 5%				
		220-01138-00	PCB T700 RSSI				
		356-00010-52	PIN EDGE MTG 0.8MM PCB WAKO				



T800-04 RSSI PCB (IPN 220-01138-00) - Bottom Side



T800-04 RSSI PCB (IPN 220-01138-00) - Top Side



0B	UPDATED ASSEMBLY DRAWINGS.	MC				
C	VOLTAGE OVERLAY	WD				
B	ADDED ASSEMBLY DRAWING.	GWLK				
A	UPDATED SYMBOLS	DE				
T-99	ORIGINAL	J.S				
REV/ISS	AMENDMENTS	DRAWN	CHKD	D.O.	APVD	DATE

© TAIT ELECTRONICS
 T700 RSSI SCHEMATIC
 IPN: 220-01138-00 ISSUE: B 2 SC. 1 ID:
 PROJECT: DESIGNER: FILE NAME: FILE DATE: NO. SHEETS:
 700RSL08 09/08/92 1

